

## **Simplify Your Garage Build with Elevate Homes**

Architecturally designed garages to complement your Elevate home.

---



### **The Perfect Companion to your Elevate Home**

Our architecturally designed garage plans are for people who want a stylish, practical addition to their property. So, whether you're after secure storage, a workshop, or room for cars, boats or toys, our garage plans have been developed to perfectly complement the clean lines and contemporary finishes of your Elevate transportable home.

While we don't construct and deliver garages, due to the need for concrete foundations, our garage plans allow you to achieve visual consistency with your chosen Elevate home and to build with confidence - working alongside your own trusted local builder.

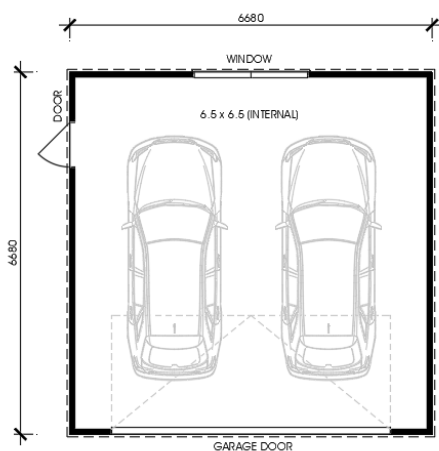
## The Garage Collection, by Elevate Homes

### Designed for Style, Built for Practicality

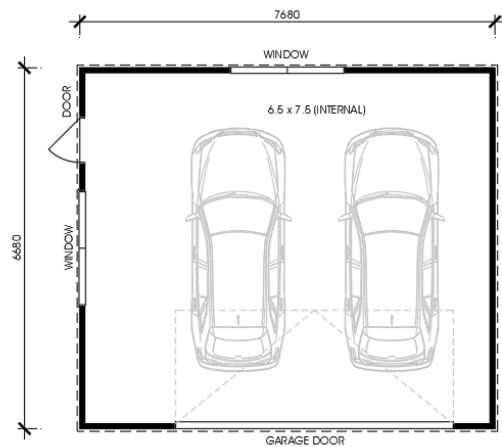
Purposefully designed to complement your Elevate home, our garages feature the same striking cladding, architectural detailing, and premium craftsmanship for a cohesive, seamlessly stylish finish.



### Two Floor Plan Options:

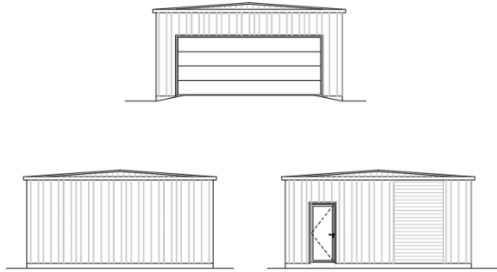


**Elevate Garage 45 Floor Plan**  
(Internal width 6.5m)

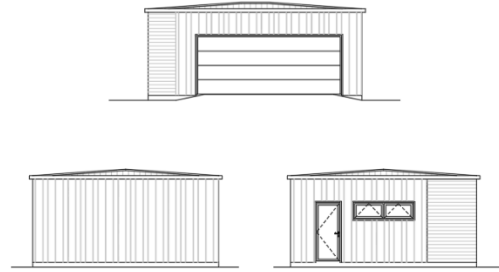


**Elevate Garage 51 Floor Plan**  
(internal width 7.5m)

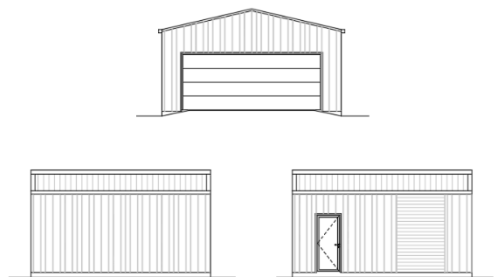
### Three Roofline Options:



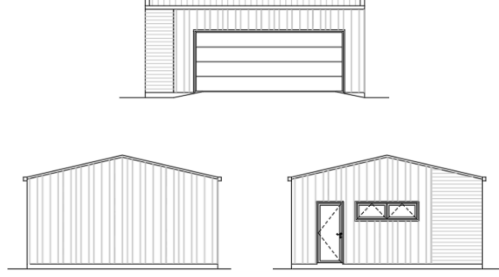
**Garage Box 45**



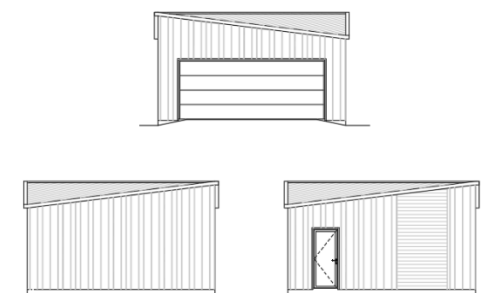
**Garage Box 51**



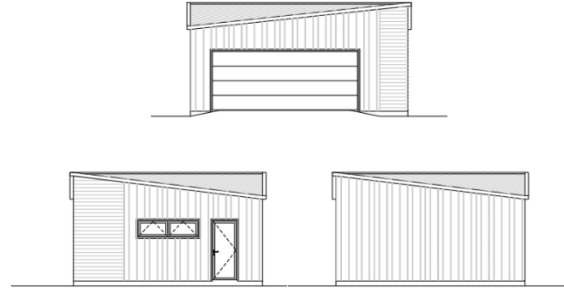
**Garage Barn 45**



**Garage Barn 51**



**Garage Tilt 45**



**Garage Tilt 51**

## **Complete Garage Design Package**

You get professionally designed garage plans and everything you need to take your garage from design to done - with the flexibility to manage the build your way.

---

### **What's Included:**

#### **Architectural Plans + Building Materials List**

**\$3,000 (inc. GST)**

Ideal if you're working with a local builder and want consent-ready plans and a clear list of what's needed.

- ✓ Full set of architectural, consent-ready construction plans
- ✓ Comprehensive building materials list to hand over to your builder for easy quoting and ordering.

### **Optional Add-On:**

#### **Supply of Specified Building Materials**

Let us take care of sourcing the materials for you. We'll provide a complete package of building materials, ready for delivery direct to your site (*freight additional*).

Note: See the final page of this document for exclusions and disclaimers.

---

## **Ready to Add the Perfect Garage to Your Elevate Home?**

Get in touch with our team to get advice on the best garage fit for your home. We're here to help make it easy.

W | [www.elevatehomes.co.nz](http://www.elevatehomes.co.nz)  
E | [team@elevatehomes.co.nz](mailto:team@elevatehomes.co.nz)  
T | 07 242 0448

*Note: Images within this document may include client variations or upgrades.*

## **Important Information: Garage Plans & Materials**

### **Plans and Construction**

- Our garage plans are designed for experienced builders (not kitset).
- We recommend using a Licensed Building Practitioner (LBP) to meet NZ Building Regulations.
- Plans include a standard concrete slab, but slab materials are not included, and site-specific upgrades may be needed.

### **Materials**

- The materials list is based on standard construction methods.
- Some items, like concrete slab materials and garage doors, are excluded.
- Elevate Homes is not responsible for extra materials needed due to builder methods or site changes.

### **Consents and Onsite Work**

- Building consents and onsite works (earthworks, labour, service connections) are not included.
- We can assist with consents for an additional fee.

### **Payment Terms**

- A \$3,000 (incl. GST) payment is required before plans and materials lists are released. This payment is non-refundable.
- Changes to standard plans are charged hourly.
- For material supply packages, a 50% deposit is required before ordering, with the balance due before delivery. Materials are non-refundable once ordered.

### **Delivery**

- Delivery is optional and quoted separately.
- Clients must inspect deliveries immediately and report any issues within 2 days.

### **General**

- Packages are only available to Elevate Homes clients.
- Clients must ensure plans and materials comply with local requirements before building.
- All plans remain Elevate Homes' intellectual property and cannot be reused without permission.
- Elevate Homes is not responsible for delays or costs caused by misuse or on-site changes.

*Please contact us for the full list of exclusions, disclaimers and terms.*